

DRY BLOCK HEATERS

ADVANCED Dry Block Heaters

- Exceptional temperature uniformity and stability
- Optional external temperature probe
- Holds interchangeable modular blocks



Designed for applications that require repeatable results and superior temperature stability. These multi-purpose units are ideal for incubation and activation of cultures, enzyme reactions, immunoassays, melting/boiling points, and a wide variety of other laboratory procedures. Integral support rod holder with locking knob accepts optional External Temperature Probe Kit. Optional External Temperature Probe Kit monitors actual block or sample temperature. Each of the five models accepts separate interchangeable modular blocks, accommodating various tube sizes from 0.2mL micro-tubes to 50mL centrifuge tubes. Each block has a thermometer well for measuring block temperature. Efficient heater features close tube-and-block contact with a low density design for exceptional temperature uniformity. Modular blocks are sold separately.

Operating Features:

Microprocessor control: PID temperature control, with optional external RTD probe, offers a temperature stability of $\pm 0.1^{\circ}\text{C}$ with a temperature uniformity as low as $\pm 0.1^{\circ}\text{C}$. Samples are heated to temperature quickly and accurately. Temperature is adjusted in $\pm 0.1^{\circ}\text{C}$ increments.

LED display: Touch pad controls with easy-to-read, independent LED displays for temperature, and time. Provides repeatable and accurate results every time and is easily visible across lab benches. Shows set-point and actual temperatures. Timer will display elapsed time or when programmed to user defined limit, will shut off unit when time reaches zero. Display will show last used settings even after power has been turned off.

Audible alarm: In timed mode, alarm will sound when time reaches zero and when unit reaches set-point temperature.

Temperature calibration mode: Allows user to calibrate unit to an external temperature device.

Safety Features:

Caution hot indicator: Hot warning symbol light is illuminated when the temperature is above 40°C .

Overshoot protection: If the unit exceeds the set temperature by 10°C the unit will automatically stop heating.

CAUTION! To avoid possible electrical hazard, do not fill well or block opening with water or other fluids. Unit is designed as a dry bath/incubator.

Operating Conditions:

Units can be run in environments from 18 to 33°C (64 to 91°F).

Applications:

Denaturing proteins, DNA applications, ELISA and other immunoassay studies.



Size	Temperature Range	Stability @ 37°C	Uniformity w/in the Block @ 37°C	Uniformity Across Similar Blocks @ 37°C	Heat-Up Time to 100°C
1 block	Ambient $+5^{\circ}\text{C}$ to 120°C	$\pm 0.1^{\circ}\text{C}$	$\pm 0.1^{\circ}\text{C}$	N/A	45 min.
2 block				$\pm 0.1^{\circ}\text{C}$	50 min.
3 block				$\pm 0.15^{\circ}\text{C}$	55 min.
4 block				$\pm 0.2^{\circ}\text{C}$	60 min.
6 block				$\pm 0.3^{\circ}\text{C}$	65 min.

Ordering Information

Units include a 92" (234cm) detachable, 3-wire cord and plug (230 volt units are supplied with Euro type plug). 2 year limited warranty on parts and labor.

Block Capacity	Dimensions (L x W x H)	Electrical (50/60 Hz)	Ship Weight	Part Number	Price
1	12.4 x 8 x 3.5" (31.5 x 20.3 x 8.9cm)	120V 0.9 amps 110 watts	5.8lb (2.6kg)	949500	\$576.00
		230V 0.5 amps 110 watts		949501	\$633.00
2	15.4 x 8 x 3.5" (39.1 x 20.3 x 8.9cm)	120V 1.7 amps 210 watts	6.4lb (2.9kg)	949502	\$706.00
		230V 0.9 amps 210 watts		949503	\$779.00
3	18.4 x 8 x 3.5" (46.7 x 20.3 x 8.9cm)	120V 1.7 amps 210 watts	8lb (3.6kg)	949504	\$815.00
		230V 0.9 amps 210 watts		949505	\$899.00
4	16.9 x 8 x 3.5" (42.9 x 20.3 x 8.9cm)	120V 2.6 amps 310 watts	8.5lb (3.9kg)	949506	\$1,001.00
		230V 1.3 amps 310 watts		949507	\$1,102.00
6	20.9 x 8 x 3.5" (53.1 x 20.3 x 8.9cm)	120V 3.4 amps 410 watts	10lb (4.5kg)	949508	\$1,088.00
		230V 1.7 amps 410 watts		949509	\$1,197.00



External Temperature Probe Kit

Enables the unit to read actual block or sample temperature and display that temperature on the control panel. The optional External Temperature Probe Kit includes a stainless steel RTD probe, 18" (45.7cm) stainless steel support rod, thermometer/temperature probe extension clamp and hook connector. The RTD probe is designed to fit perfectly in to the thermometer well of each modular block.

Description	Part Number	Price
Optional External Temperature Probe Kit	949520	\$204.00



Did you know?

Temperature stability is defined as the ability to maintain and not vary from a set temperature.

Temperature uniformity is defined as the ability of a temperature to remain consistent from one area of a heating device to another.

DRY BLOCK HEATERS

STANDARD Dry Block Heaters

- Multi-purpose use
- Holds interchangeable modular blocks
- Analog controls

These multi-purpose units are ideal for incubation and activation of cultures, enzyme reactions, immunoassays, melting/boiling points and a wide variety of other laboratory procedures. Each of the five models accepts separate interchangeable modular blocks, accommodating various sample enclosures such as micro-tubes, centrifuge tubes, vials, microplates, and PCR strips or tubes. Each block has a thermometer well for measuring block temperature. Anodized aluminum modular blocks provide superior temperature stability and heat transfer. Modular blocks are sold separately.

Operating Features:

High wattage, constant-temperature Dry Block Heaters are economical, versatile and compact.

Microprocessor control: PID temperature controller maintains precise temperature control. Samples are heated to temperature quickly and accurately

Adjustment knobs: Basic temperature control knobs with 1 to 10 dial markings for low temperature and high temperature adjustments. Low range knob adjusts from ambient to 100°C and high range knob adjusts from 75°C to 150°C.

CAUTION! To avoid possible electrical hazard, do not fill well or block opening with water or other fluids. Unit is designed as a dry bath/incubator.

Operating Conditions:

Units can be run in environments from 18 to 33°C (64 to 91°F).

Applications:

Coagulation and RH Studies.



949512



949510

Size	Temperature Range	Stability @ 37°C	Uniformity w/in the Block @ 37°C	Uniformity Across Similar Blocks @ 37°C	Heat-Up Time to 100°C
1 block	Low Range: Ambient +5°C to 100°C	±1.0°C	±0.1°C	N/A	45 min.
2 block		±1.5°C		±0.1°C	50 min.
3 block	High Range: 75°C to 150°C	±2.0°C		±0.15°C	60 min.
4 block		±2.0°C		±0.2°C	70 min.
6 block		±2.0°C		±0.3°C	75 min.
		±2.0°C			

Ordering Information

Units include a 92" (234cm) detachable, 3-wire cord and plug (230 volt units are supplied with Euro type plug). 2 year limited warranty on parts and labor.

Block Capacity	Dimensions (L x W x H)	Electrical (50/60 Hz)	Ship Weight	Part Number	Price
1	12.4 x 8 x 3.5" (31.5 x 20.3 x 8.9cm)	120V 0.9 amps 110 watts	5.8lb (2.6kg)	949510	\$250.00
		230V 0.5 amps 110 watts		949511	\$275.00
2	15.4 x 8 x 3.5" (39.1 x 20.3 x 8.9cm)	120V 1.7 amps 210 watts	6.4lb (2.9kg)	949512	\$402.00
		230V 0.9 amps 210 watts		949513	\$444.00
3	18.4 x 8 x 3.5" (46.7 x 20.3 x 8.9cm)	120V 1.7 amps 210 watts	8lb (3.6kg)	949514	\$533.00
		230V 0.9 amps 210 watts		949515	\$587.00
4	16.9 x 8 x 3.5" (42.9 x 20.3 x 8.9cm)	120V 2.6 amps 310 watts	8.5lb (3.9kg)	949516	\$674.00
		230V 1.3 amps 310 watts		949517	\$741.00
6	20.9 x 8 x 3.5" (53.1 x 20.3 x 8.9cm)	120V 3.4 amps 410 watts	10lb (4.5kg)	949518	\$925.00
		230V 1.7 amps 410 watts		949519	\$1,018.00

Modular blocks are constructed from a solid anodized aluminum block. The close contact of tubes-to-block-walls allow for maximum heat retention. Each block has a thermometer well for measuring block temperature. **CAUTION!** To avoid possible electrical hazard, **DO NOT** fill well or block with water or other liquids. Units are designed as a dry bath/incubator.

Single block dimensions (L x W x H): 3.75 x 3 x 2" (9.5 x 7.6 x 5.1cm), **Double block dimensions (L x W x H):** 6 x 3.75 x 2.25" (15.2 x 9.5 x 5.7cm)

Microcentrifuge Tube Blocks

Single block.

Brand/Sample Type	No. of Wells	Well Dia.	Well Depth	Part Number	Price
0.5mL Tube	30	7.9mm	27.6mm	949108	\$89.00
1.5mL Tube	20	11.1mm	39.1mm	949110	\$93.00
1.5mL Eppendorf™ Tube	20	11.5mm	36.9mm	949113	\$93.00
2mL Eppendorf™ Tube	20	11.5mm	38.1mm	949151	\$92.00
2mL Corning™ Tube	20	10.9mm	38.1mm	949152	\$92.00



Titer Plate Block

Double block. Fits 2/4/6 block Dry Block Heaters. Ideal for 96-well or 384-well titer plates. Recessed well for better stability, flat surface good for flat and round bottom plates.

Sample Type	Well Depth	Part Number	Price
Titer Plate	13.5mm	949115	\$193.00



Conical-Bottom Centrifuge Tube Blocks

Single block.

Sample Type	No. of Wells	Well Dia.	Well Depth	Part Number	Price
15mL Tube	12	17.1mm	44.5mm	949131	\$89.00
50mL Tube	5	29mm	47.6mm	949127	\$89.00



Standard Test Tube Blocks

Single block.

Sample Type	No. of Wells	Well Dia.	Well Depth	Part Number	Price
6mm Tube	30	8.3mm	48.4mm	949109	\$89.00
10mm Tube	24	10.7mm	48.4mm	949102	\$89.00
12/13mm Tube	20	13.9mm	48.4mm	949103	\$89.00
12/13mm Tube	16	13.9mm	48.4mm	949116	\$89.00
15/16mm Tube	12	17.5mm	48.4mm	949104	\$89.00
17/18mm Tube	12	19.1mm	48.4mm	949155	\$89.00
20mm Tube	8	21mm	48.4mm	949105	\$89.00
25mm Tube	6	26.2mm	48.4mm	949106	\$89.00
35mm Tube	4	35mm	47.6mm	949126	\$89.00



DRY BLOCK HEATERS

Modular Blocks & Accessories

Combination Blocks

Single block. These blocks have been designed for variable sized samples.

Sample Type	No. of Wells	Well Dia.	Well Depth	Part Number	Price
Test Tube Combination:	6mm	6	8.3mm	949107	\$93.00
	12/13mm	5	13.9mm		
	25mm	3	26.2mm		
Centrifuge Tube Combination:	1.5mL	4	11.1mm	949153	\$92.00
	15mL	3	17.1mm		
	50mL	2	29mm		
Micro-Tube Combination:	0.5mL	6	7.9mm	949154	\$92.00
	1.5mL	10	11.1mm		
	2mL	5	11.5mm		



Vial Blocks

Single block. Designed for sample/serum and scintillation vials.

Sample Type	No. of Wells	Well Dia.	Well Depth	Part Number	Price
12mm Vial	20	12.7mm	30mm	949142	\$96.00
15mm Vial	20	15.8mm	35mm	949143	\$96.00
16mm Vial	15	16.4mm	45mm	949150	\$96.00
17mm Vial	12	17.8mm	45mm	949144	\$96.00
19mm Vial	12	19.7mm	45mm	949145	\$96.00
21mm Vial	9	21.7mm	45mm	949146	\$96.00
23mm Vial	8	23.8mm	45mm	949147	\$96.00
25mm Vial	8	25.8mm	45mm	949148	\$96.00
28mm Vial	6	28.8mm	45mm	949149	\$96.00



PCR - Plate, Tube, Strip Blocks

Single and double block. Tapered tube wells for 0.2mL tubes. Spaced for easy access and removal.

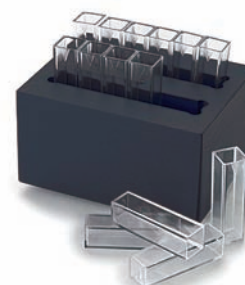
Sample Type	Block Size	No. of Wells	Well Dia.	Well Depth	Part Number	Price
96-well PCR Plate	Double	96	6.4mm	15.5mm	949130	\$230.00
10 x 8 Tube Strips	Single	80	6.4mm	15.5mm	949128	\$110.00
Individual Tubes	Single	64	6.4mm	20.2mm	949129	\$110.00



Cuvette Block

Single block. Two parallel slots fit 6 cuvettes in each slot, side-by-side.

Sample Type	No. of Wells	Well Depth	Part Number	Price
(12) 12.5mm Cuvettes	2	25.4mm	949112	\$110.00



Solid Blocks

Single and double block. For use as a low-temperature hotplate, slide drying, or for custom drilling to make a custom block.

Block Size	Dimension (L x W x H)	Part Number	Price
Single	3.75 x 3 x 2" (9.5 x 7.6 x 5.1cm)	949111	\$93.00
Double	6 x 3.75 x 2.25" (15.2 x 9.5 x 5.7cm)	949117	\$136.00



Stainless Steel Sand Baths

Ideal for irregular vessels. Stainless steel construction for superior corrosion resistance. Designed to hold sand, stainless steel shot or non-volatile liquids.

For Unit	Dimensions (L x W x H)	Part Number	Price
1 Block Dry Block Heater	3.75 x 3 x 2.5" (9.5 x 7.6 x 6.4cm)	949132	\$209.00
2 Block Dry Block Heater	3.75 x 5.875 x 2.5" (9.5 x 14.9 x 6.4cm)	949133	\$219.00
3 Block Dry Block Heater	3.75 x 8.8 x 2.5" (9.5 x 22.4 x 6.4cm)	949134	\$225.00
4 Block Dry Block Heater	5.8 x 7.5 x 2.5" (14.7 x 19.1 x 6.4cm)	949135	\$230.00
6 Block Dry Block Heater	5.8 x 11.3 x 2.5" (14.7 x 28.7 x 6.4cm)	949136	\$240.00
Accessory		Part Number	Price
Sand, 1lb (0.454kg)		949137	\$62.00
Stainless Steel Shot, 1lb (0.454kg)		949138	\$75.00



Low Temperature Covers

Plexiglass cover reduces air flow for additional temperature stability in low-temperature applications. Two sides are open 0.25" (6.4mm).

Block Size	Dimensions (L x W x H)	Part Number	Price
2 Block Cover	6.5 x 6.5 x 1.625" (16.5 x 16.5 x 4.1cm)	949139	\$77.00
4 Block Cover	8.5 x 8.5 x 1.625" (21.6 x 21.6 x 4.1cm)	949140	\$83.00
6 Block Cover	12.5 x 8.5 x 1.625" (31.8 x 21.6 x 4.1cm)	949141	\$89.00



Don't see the block you need?

Custom modular blocks are available. Call customer service at 1-888-Talboys for more information.